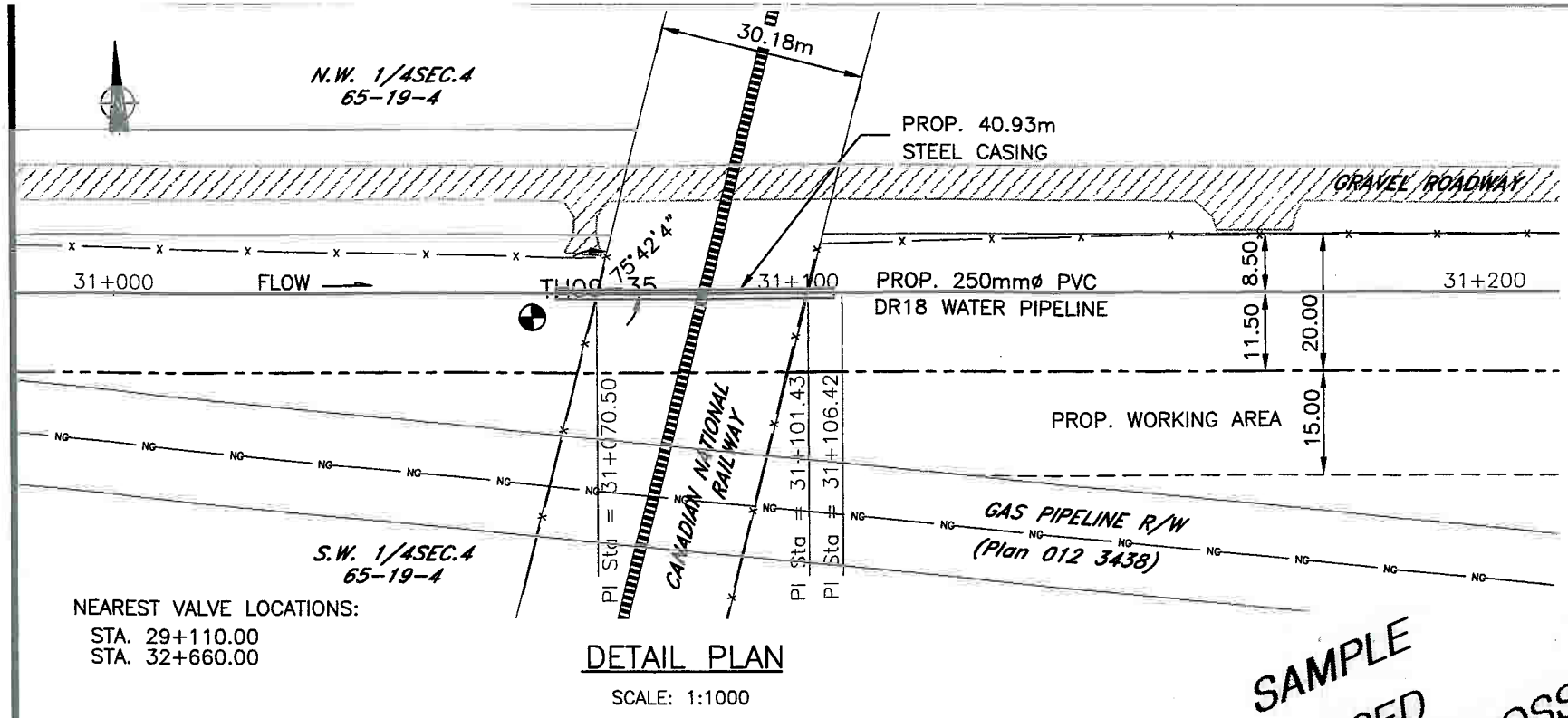
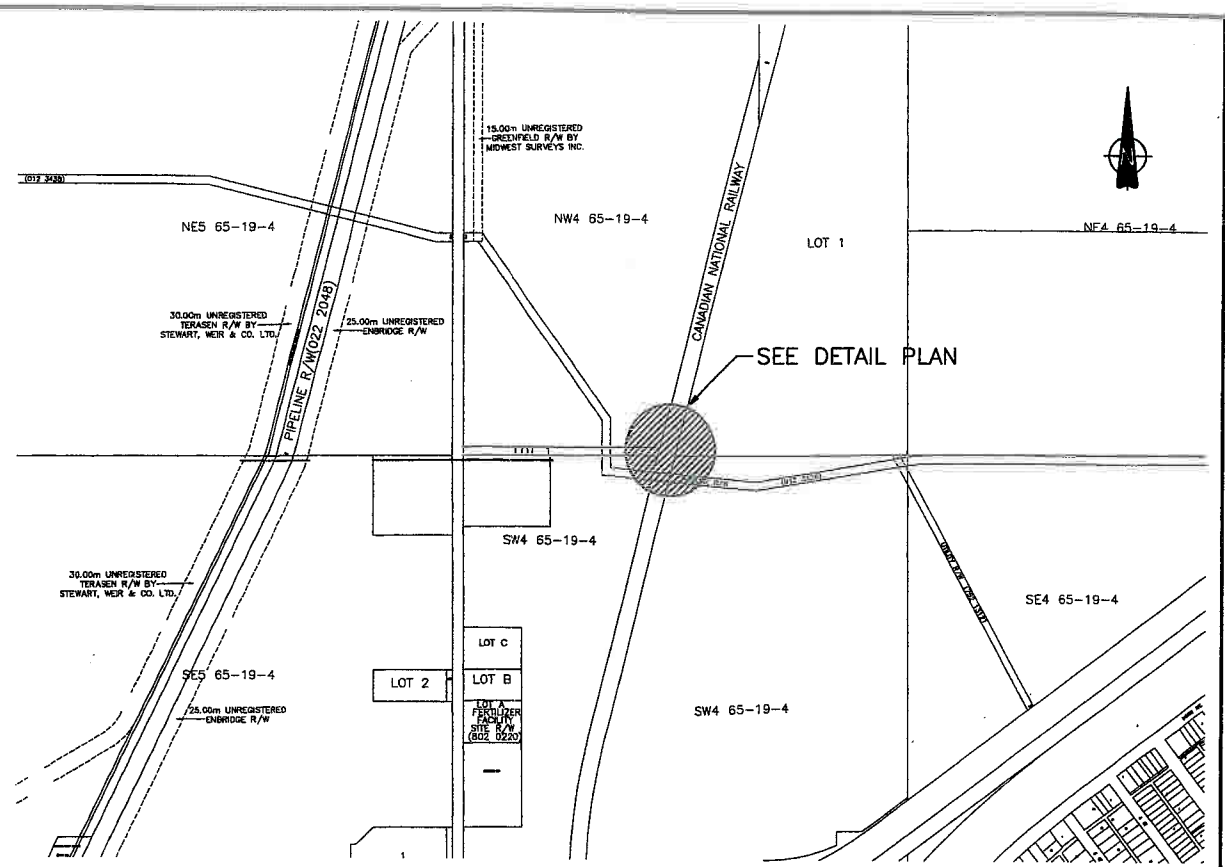


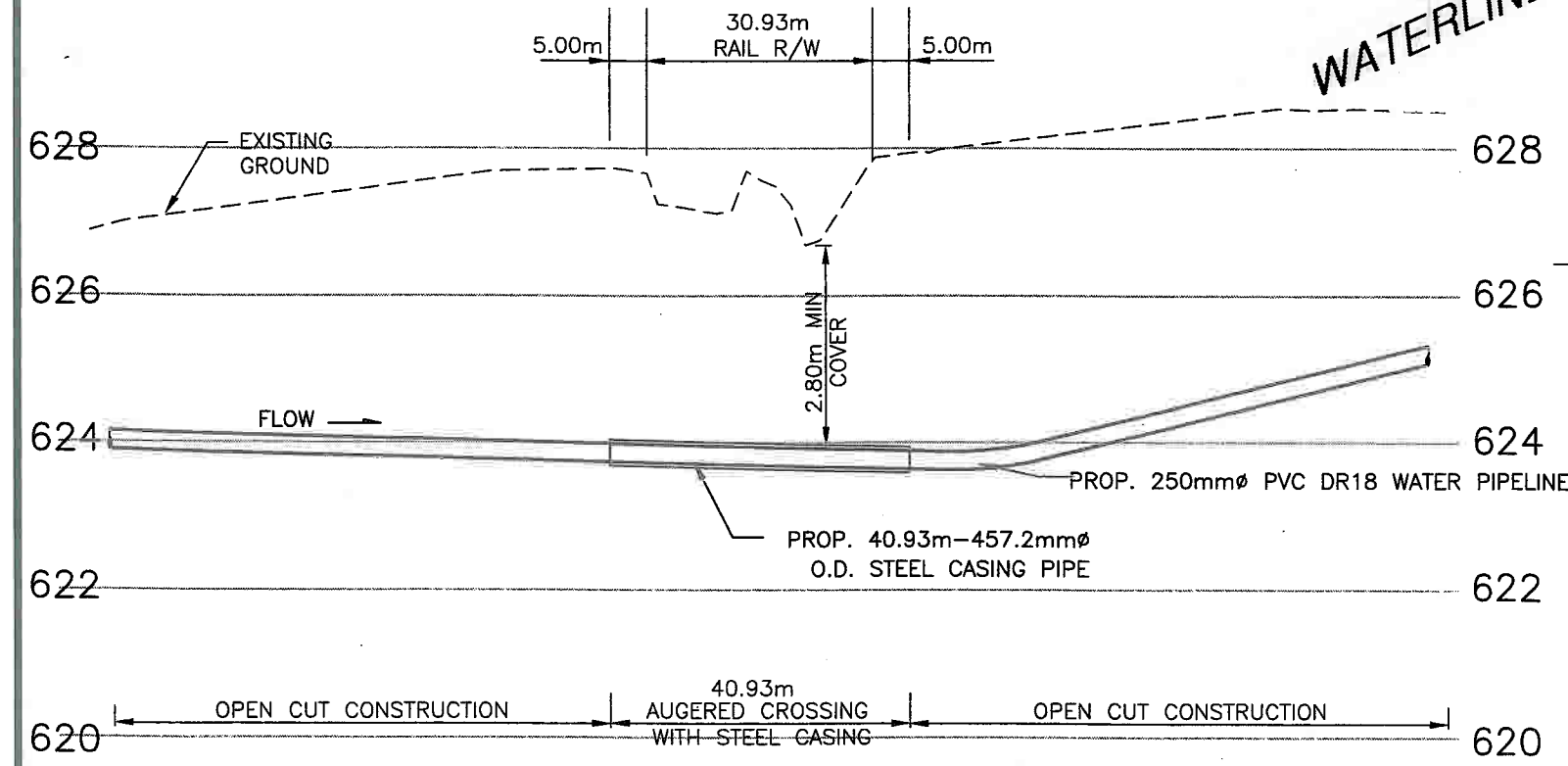
This Drawing Is For The Use Of The Client And Project Indicated. No Representations Of Any Kind Are Made To Other Parties.



DETAIL PLAN
SCALE: 1:1000

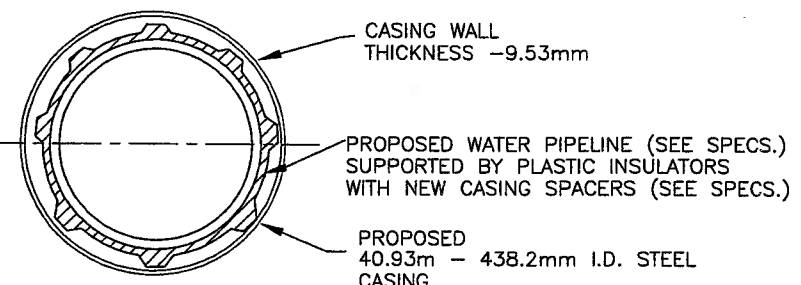


LOCATION PLAN
SCALE: N.T.S.



CROSSING PROFILE
SCALE: HORZ. 1:1000
VERT. 1:100

**SAMPLE
CASED
WATERLINE CROSSING**



**END VIEW CARRIER
PIPE & CASING**

CASING PIPE SPECIFICATION:	
OUTSIDE DIAM:	457.2mm
INSIDE DIAM:	438.2mm
WALL THICKNESS:	9.53mm
PIPE SPECIFICATION:	241MPa MIN. YIELD STRENGTH
LENGTH:	40.93m
MATERIAL:	STEEL
PROTECTION:	NIL
CARRIER PIPE SPECIFICATION:	
CONTENTS:	POTABLE WATER
INSIDE DIAM:	250mm
WALL THICKNESS:	16mm
SPEC.:	DR18
OPER./MAX. PRES.:	656kPa / 834kPa
PROTECTION:	NIL

- NOTES:**
- HYDROVAC TO CONFIRM DEPTH AND LOCATION OF EXISTING UTILITIES PRIOR TO CONSTRUCTION
 - ENDS OF CASING WILL NOT BE SEALED
 - CONSTRUCTION AND MAINTENANCE TO BE IN ACCORDANCE WITH THE CANADIAN TRANSPORTATION AGENCY GENERAL ORDER E-10
 - WARNING MARKING ARE REQUIRED AT EACH SIDE OF THE CN R.O.W.

CANADIAN NATIONAL RAILWAY	
DIVISIONAL ENGINEER	
REGIONAL ENGINEER	
MANAGER	
RAILWAY CHAINAGE	
MILEAGE	1.37
SUBDIVISION	ALPAC IND. SPUR

NO.	DATE	ENG.	BY	SUBJECT
1	2009/03/03	L.K.	B.W.	ISSUE FOR APPROVAL
0	2009/02/12	C.M.	B.W.	TENDER ISSUE
A	2008/11/25	C.M.	B.W.	PRELIMINARY ISSUE



PERMIT TO PRACTICE
ASSOCIATED ENGINEERING ALBERTA LTD.
Signature: *[Signature]*
Date: *Mar 5, 2009*
PERMIT NUMBER: P 3979
The Association of Professional Engineers, Geologists and Geophysicists of Alberta



PROJECT No.	20083623
SCALE	AS SHOWN
DRAWN	B. Wong
DESIGNED	L. Kurach <i>pk 5/2/09</i>
CHECKED	C. Maki
APPROVED	C. Skowronski
DATE	2008-06

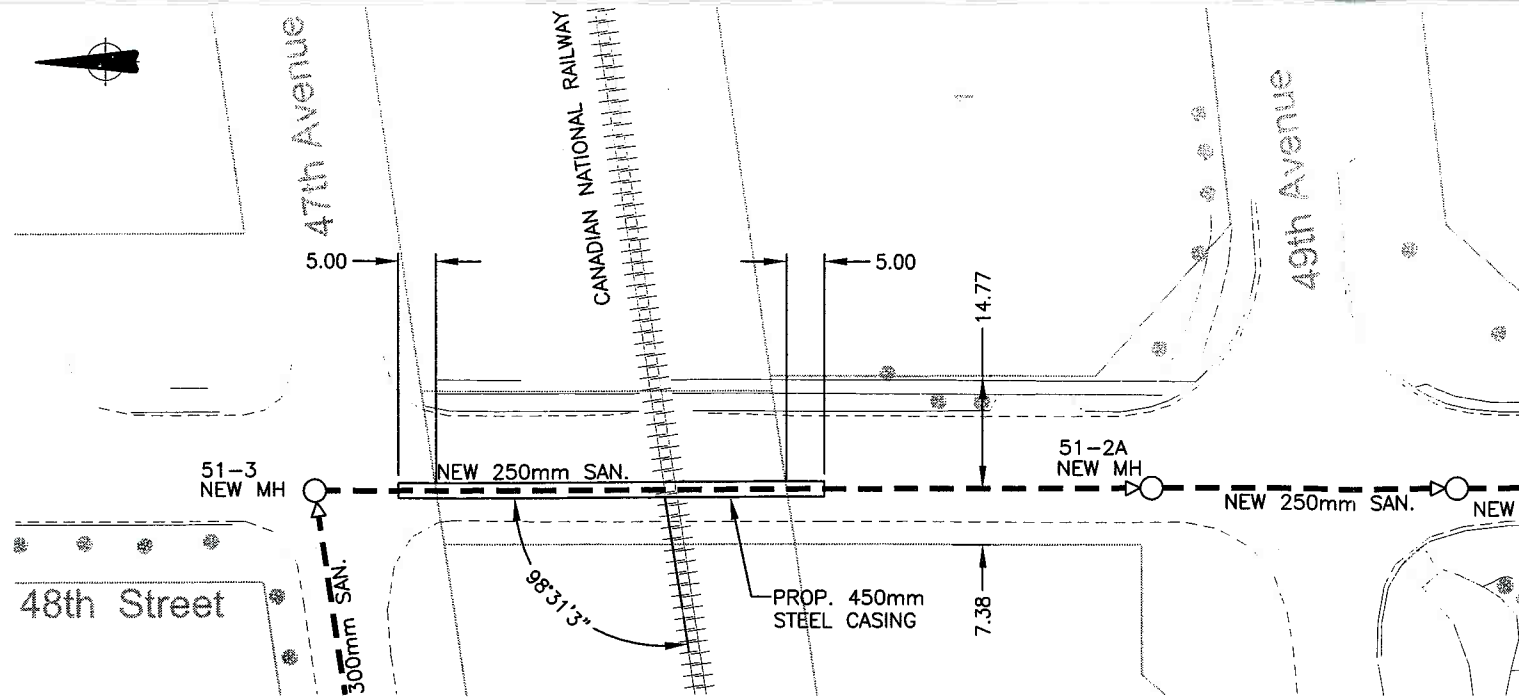
ASPEN REGIONAL WATER SERVICES COMMISSION

RAILWAY CROSSING
S.W. 1/4 SEC. 4-65-19-4

COLINTON - BOYLE REGIONAL WATERLINE CONTRACT No. 9

DRAWING NUMBER	REV. NO.	SHEET
3623-9-115	1	1/2

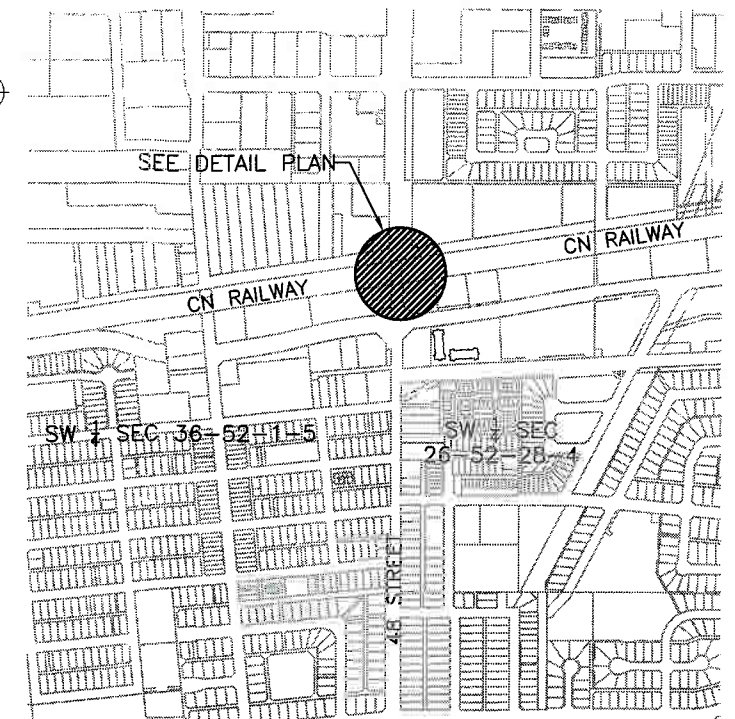
This Drawing Is For The Use Of The Client And Project Indicated No Representations Of Any Kind Are Made To Other Parties



INSTALLATION AND MAINTENANCE TO BE IN ACCORDANCE WITH TC E-10 AND LATEST EDITION OF CSA STANDARD.

DETAIL PLAN

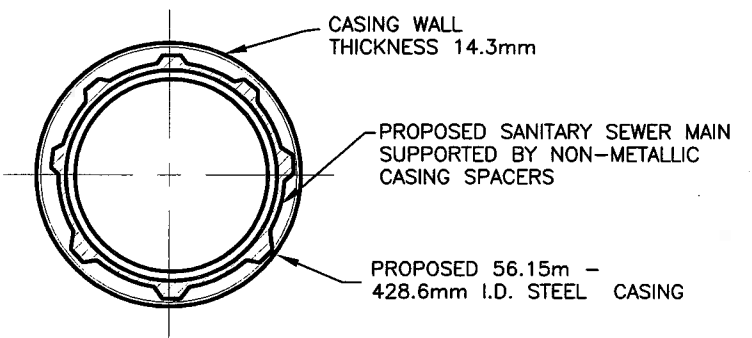
SCALE: 1:1000



LOCATION PLAN

SCALE: N.T.S.

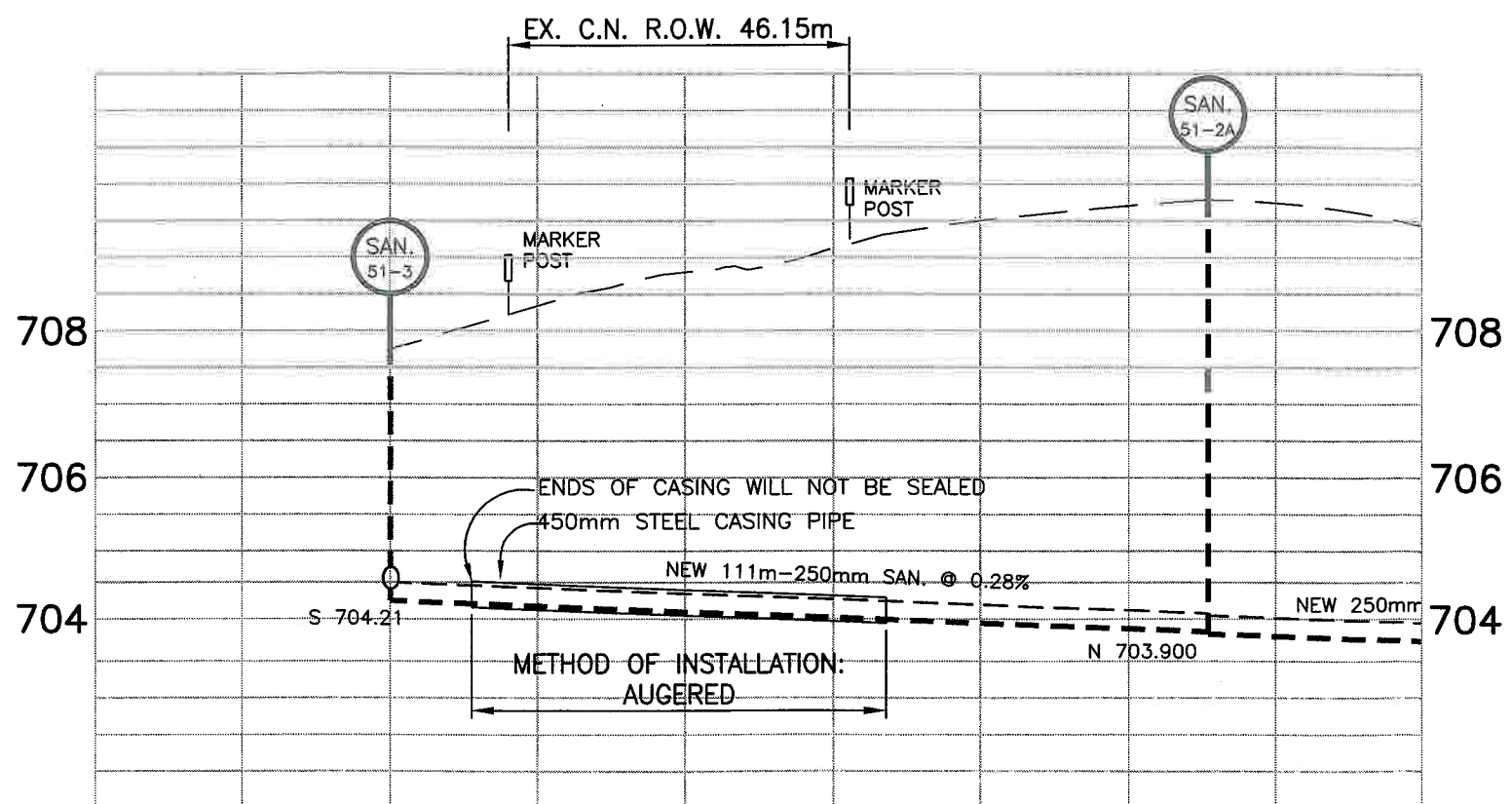
- CASING PIPE SPECIFICATION:**
- INSIDE DIAM: 428.6mm
 - OUTSIDE DIAM: 457.2mm
 - WALL THICKNESS: 14.3mm
 - PIPE SPECIFICATION: 241MPa MIN. YIELD STRENGTH
 - LENGTH: 56.15 metres
 - MATERIAL: STEEL
 - PROTECTION: NIL
- CARRIER PIPE SPECIFICATION:**
- CONTENTS: SANITARY SEWAGE
 - INSIDE DIAM: 251.46mm
 - WALL THICKNESS: 7.62mm
 - SPEC.: PVC DR35
 - OPER./MAX. PRES.: GRAVITY
 - PROTECTION: NIL



END VIEW CARRIER PIPE & CASING

SCALE: N.T.S.

SAMPLE
CASED
SEWER CROSSING



CROSSING PROFILE

SCALE: HORZ. 1:1000 VERT. 1:100

CANADIAN NATIONAL RAILWAYS	
DIVISIONAL ENGINEER	
REGIONAL ENGINEER	
MANAGER	
RAILWAY CHAINAGE	
MILEAGE	
SUBDIVISION	

NO.	DATE	ENG.	BY	SUBJECT
A	2009/05/26	A.M.	F.B.	ISSUE FOR TENDER
REVISIONS				

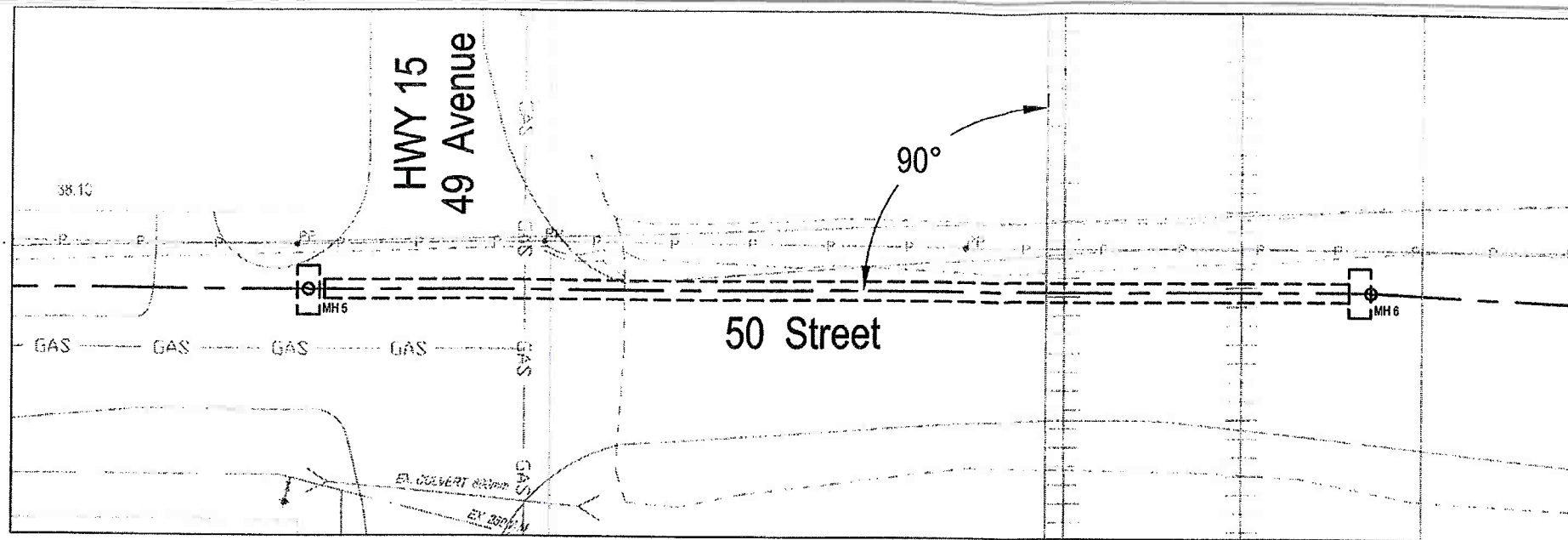
PERMIT TO PRACTICE
ASSOCIATED ENGINEERS ALBERTA LTD.
Signature: [Signature]
Date: JUL 16 2009
PERMIT NUMBER: P 3979
The Association of Professional Engineers, Geologists and Geophysicists of Alberta



PROJECT No.	20083821
SCALE	H=1:1000, V=1:50
DRAWN	F. BOSSO
DESIGNED	A. MILLER
CHECKED	
APPROVED	
DATE	2009/01/20 INITIAL

TOWN OF STONY PLAIN ALBERTA	
CANADIAN NATIONAL RAILWAY CROSSING PLAN	

HIGHWAY 779 (48th STREET) SANITARY SEWER & WATER MAIN UPGRADE		
DRAWING NUMBER	REV. NO.	SHEET
3521-1-111	A	3 10

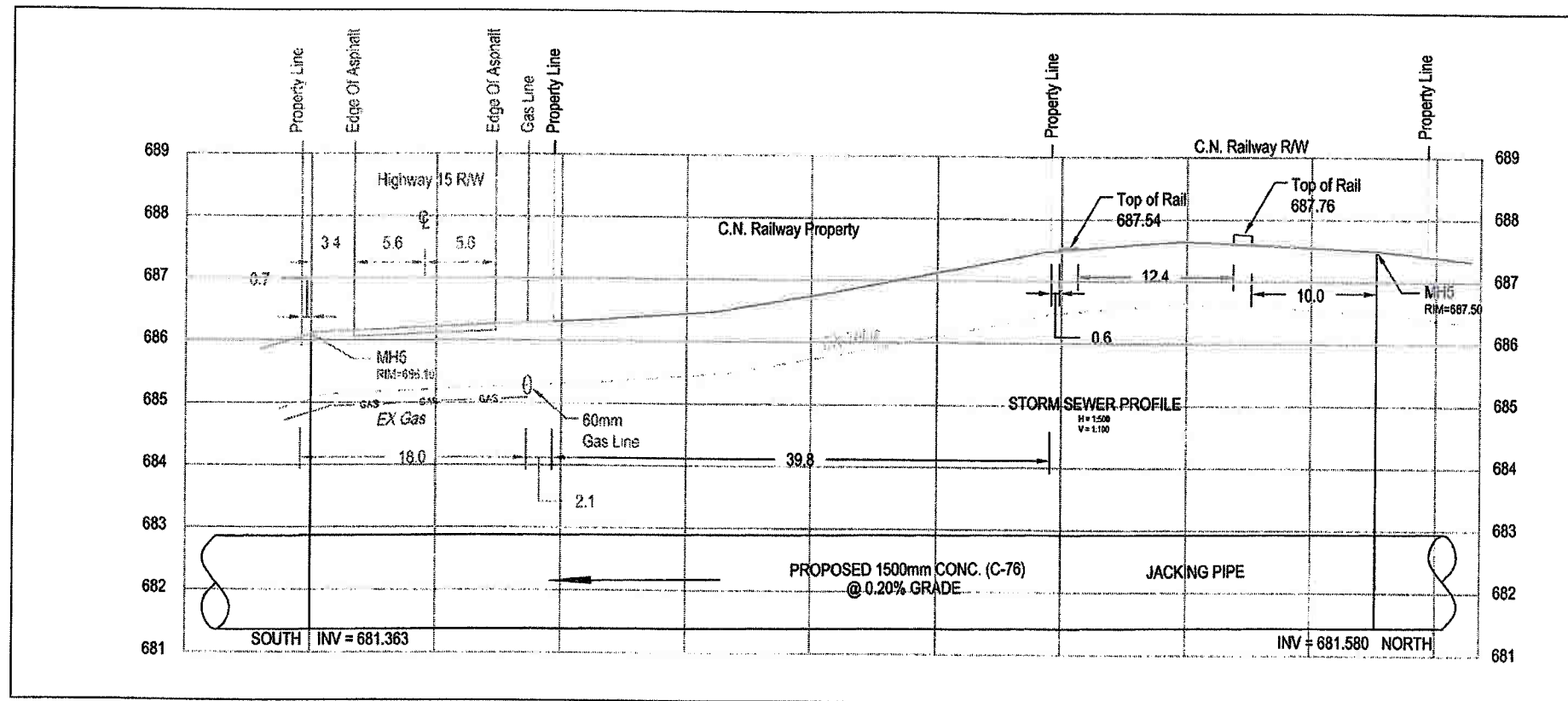


Storm Sewer Specifications

- OD - 1500mm
- Material - Reinforced Concrete C-76, Jacking Pipe, CLASS V
- Joints - Steel Belt Bands
- Trenchless Installation From MH5 to MH6
- 85m @ 0.20% grade.
- Gravity Storm Sewer Line (non-pressure)

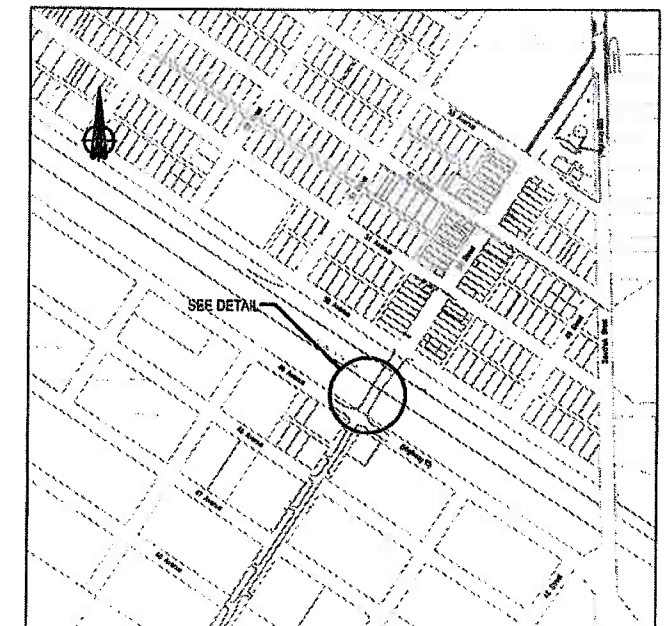
- OWNER - TOWN OF MUNDARE

NB - INSTALLATION AND MAINTENANCE TO BE IN ACCORDANCE WITH TC E10.



Location & Legal Description

- Mile 70.88
- Vegreville Subdivision
- E1/2 Section 19, Twp 53, Rge 16, W4M



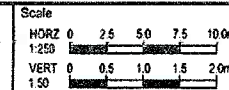
LOCATION PLAN
SCALE 1:2000
TOWN OF MUNDARE

**SAMPLE
UNCASED
SEWER CROSSING**

No.	DESCRIPTION	BY	DATE
6			
5			
4			
3			
2			
1			



PERMIT TO PRACTICE
ISL Engineering
and Land Services Ltd.
Signature: _____
Date: _____
PERMIT NUMBER P 4741
The Association of Professional Engineers,
Geologists and Geophysicists of Alberta



C.N. RAILWAY CROSSING

Drawn: _____ Design Checked: _____ Date: March 10, 2009
Discipline Review: _____ Date: March 10, 2009

**CROSSING CNR
PLAN 4217 S**

Drawing No.
**12679
XS
02**
Sheet No.
2

Lynette Palanca / Mar. 10.09.11/12679/02_drawing02a_project12679_xs.dwg