

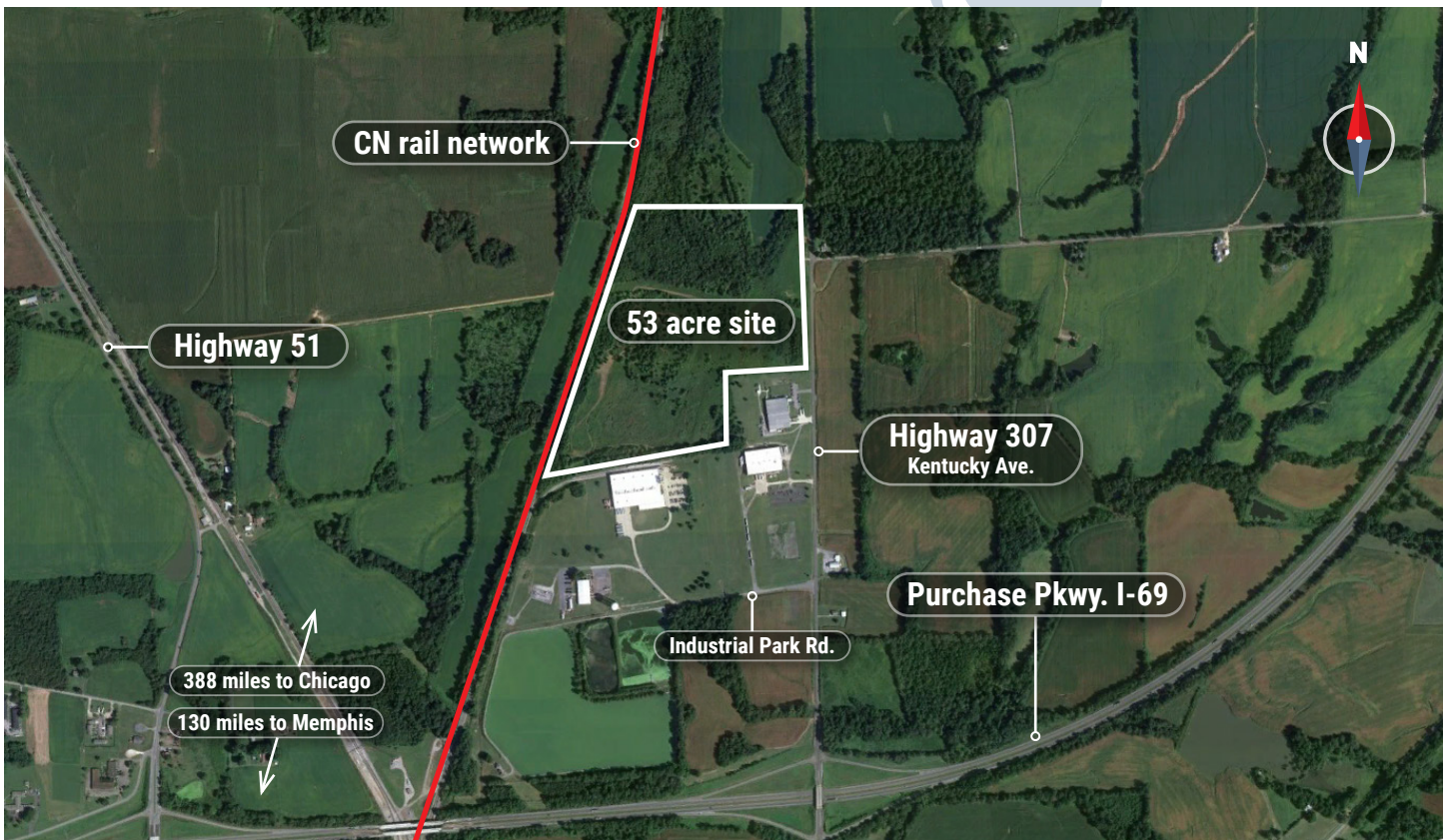


Enterprise Park at Fulton

Fulton | Kentucky

Property information:

- Site Name Enterprise Park at Fulton
- Location 916 Kentucky Avenue
- Latitude 36° 31' 45" N
- Longitude 88° 52' 31" W
- Ownership Fulton County IDA
- Site Size 53 acres (divisible to 10 acres)
- Rail Frontage 2,000 feet



Contact: **James Gunther**
james.gunther@cn.ca



Enterprise Park at Fulton

Fulton | Kentucky



This location has been designated a CN Certified Rail Ready Site. Through our 3rd party partner, Austin Consulting, this site has been evaluated and is now available for development. Our trusted, dedicated team has the resources and expertise in supply chain logistics and facility development, and we're ready to help you get to your final operational success and beyond.

By selecting a CN Rail Ready Site, you can:

- Reduce development and project build time
- Reduce investment risk by ensuring access to rail
- Increase speed to market for your products
- Lower costs due to mitigated risk

CN Rail Connectivity:

Bluford subdivision milepost 41.5

Specific Property information

Zoning classification: M2 - Heavy Manufacturing

Electric: Fulton Electric & Gas System / Gibson EMC

Natural Gas: City of Fulton

Water: City of Fulton

Wastewater: City of Fulton

Telecommunications: Gibson Connect

Highways: Interstate 69 (0.8 mi.) US-45 (1.4 mi.)

Regulatory Assessments:

Phase 1 ESA; Wetland Delineation; Endangered Species; Archaeological; Geotechnical

Suggested Fit for Use:

Ideal for, but not limited to agricultural and automotive manufacturing



Looking southwest across the site.



Looking north with CN rail network on left.