

# UPDATED: Notice of Night Construction

March 6–12, 2025

This notice of work has been reissued with new dates due to weather conditions. The previous work schedule (February 21–26, 2025) has been updated.

## Construction Activity

CN will be performing track realignment and culvert installation work at two locations along the existing CN mainline:

- Culvert installation south of Derry Road (Area 1)
- Track realignment work on both sides of Lower Base Line (Area 2)

Please refer to the map on the right for location details.

Night work is required to minimize the disruption to mainline rail operations.

## What to Expect

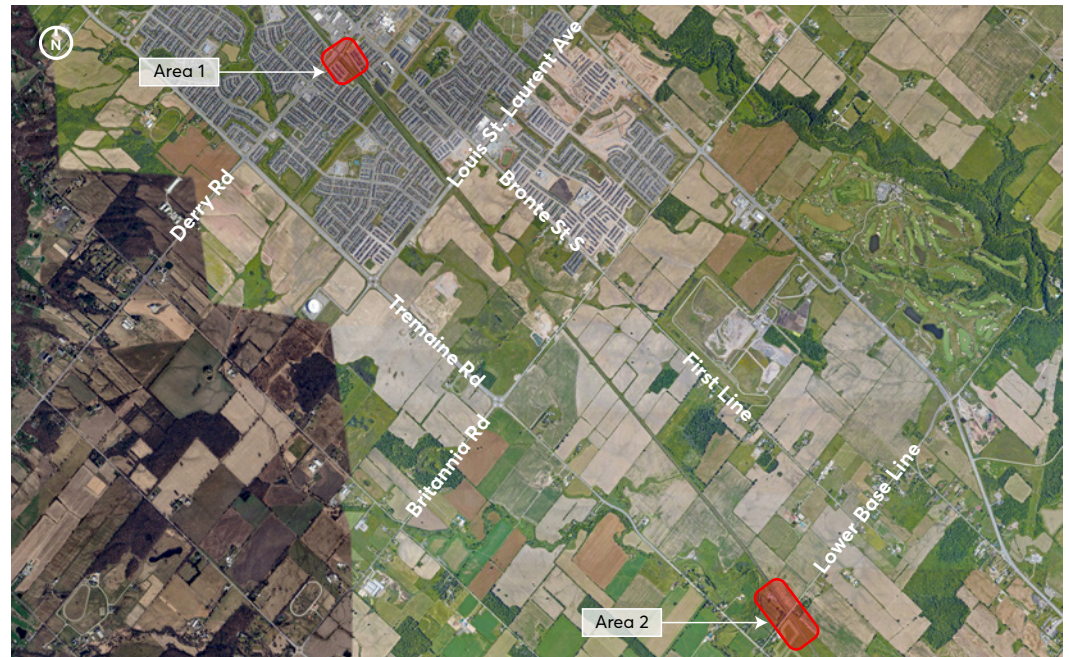
Anticipated impacts in the vicinity of the project site while work is being performed may include:

- White noise backup alarms from construction equipment and machinery
- Lighting in the work area (positioned away from residential areas)

Efforts will be made to complete the night construction activity as quickly as possible.

## UPDATED: Hours of Night Work

- **March 6-9, 2025:** Track realignment on both sides of Lower Base Line (overnight, 9:00 p.m. – 7:00 a.m.).
- **March 10-12, 2025:** Culvert installation south of Derry Road (overnight, 9:00 p.m. – 7:00 a.m.).



For more information about this project:

Visit: [cnmilton.ca](http://cnmilton.ca)  
 Email: [milton@cn.ca](mailto:milton@cn.ca)  
 Call: 1.800.216.9466

For questions regarding this notice, contact:

Manny Loureiro  
 CN Milton Project Manager  
 Call: 416.702.2303