

JIMMY DON'T



A RAIL SAFETY COMEDY OF ERRORS

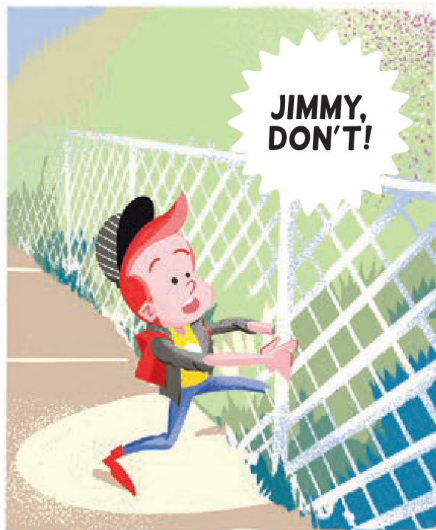
**JIMMY HAS PLENTY OF
IDEAS ABOUT HOW TO
HAVE FUN. TOO BAD SO
MANY OF THEM INVOLVE
THE RAILROAD TRACKS
THAT RUN THROUGH
HIS TOWN!**

**GET READY FOR A ROCKY
RIDE AS PLUCKY JIMMY
DRAGS HIS FRIENDS
INTO ONE BOXCAR-FULL
OF TROUBLE AFTER
ANOTHER. CAN MORRIS
THE CN POLICEMAN
KEEP THEM OFF THE
TRACKS AND MAKE SURE
THEY'RE SAFE?**

**CLIMB ABOARD AND
FIND OUT!**

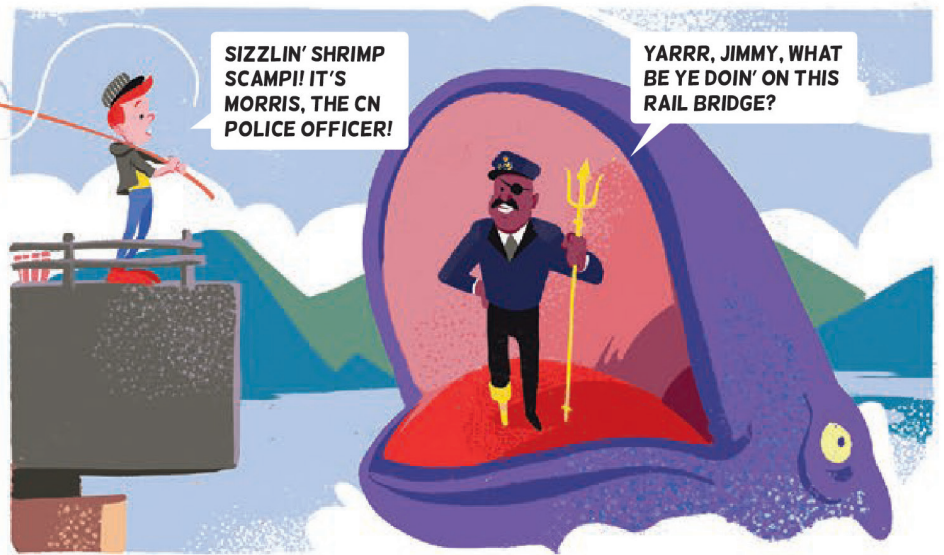
CLOSE ENCOUNTERS OF THE TRAIN TRACK KIND





CATCHING THE BIG FISH





ONE PERSON'S TREASURE



THIS IS A NORWEGIAN SABRE. THE KING OF NORWAY GAVE IT TO MY DAD!

YOU CALL THAT A TREASURE? LOOKIT THIS.



A TIGER EYE MARBLE? I GOT ONE OF THOSE.

ME TOO. WHAT'S SO SPECIAL ABOUT THAT?

IT'S MADE FROM THE REAL EYE OF A REAL TIGER!



THIS IS A REAL TREASURE—A FLAT PENNY. IN OLDEN DAYS, KIDS PUT PENNIES ON TRAIN TRACKS TO FLATTEN THEM.

SO COOL.

WHAT'S A PENNY?



THERE MUST BE A HUNDRED PENNIES IN THE JAR AT THE BACK OF YOUR DAD'S CLOSET, JIMMY!

WE'RE GONNA FLATTEN SOOO MANY PENNIES!



YES! FLAT PENNIES! YES!



JIMMY, DON'T!





MARAUDING
MEDIEVAL
MAGICIANS!
IT'S MORRIS,
THE CN POLICE
OFFICER!



JIMMY, WHAT YOU ARE DOING
IS SO DANGEROUS, I CAN'T
EVEN MAKE A JOKE OF IT.

PLACING ANYTHING ON
THE RAILS MAY RESULT IN A
DERAILMENT AND PEOPLE
COULD BE SERIOUSLY HURT.



WE DON'T
WANT
TO HURT
ANYBODY.

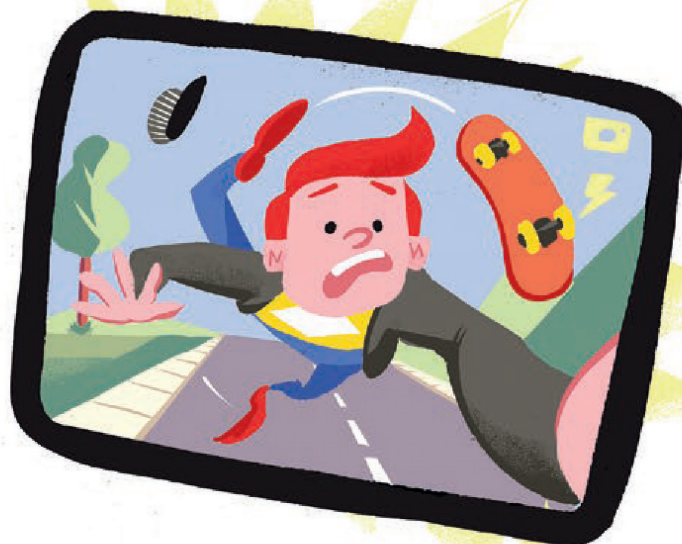
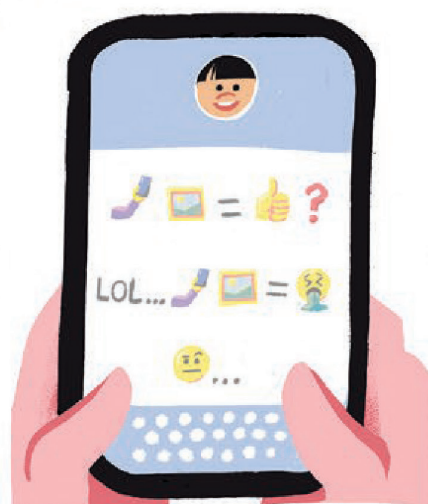
OF COURSE NOT.
AND YOU DON'T
WANT TO GET HURT
YOURSELVES, EITHER.

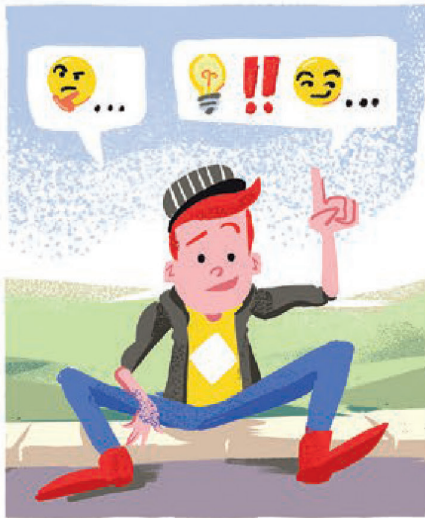
WE REALLY SHOULDN'T BE ANYWHERE
NEAR THE TRACKS, SHOULD WE?

NO, SHEILA. NOW I WILL TRANSFORM YOUR PENNIES
INTO A TREASURE BEYOND YOUR WILDEST IMAGININGS!



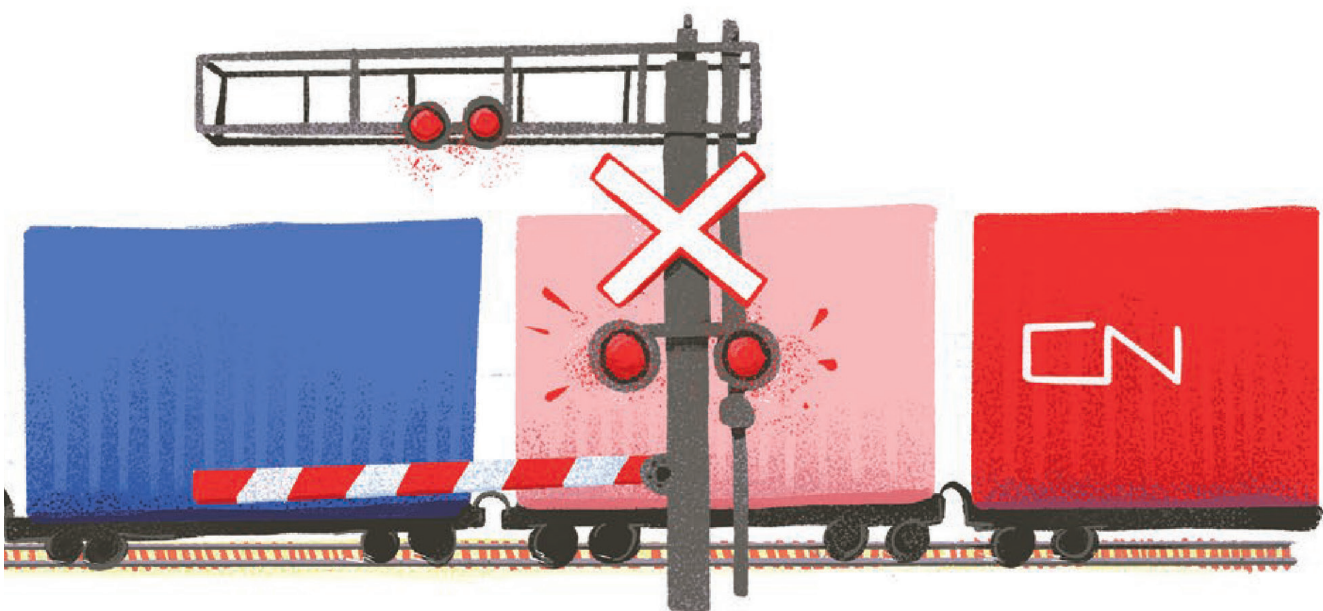
CANDY!







**REMEMBER, FOLKS — STAND AT LEAST FIVE METRES
AWAY FROM THE GATE WHILE YOU WAIT.**



AND WONDER WHAT'S IN THE TRAIN, WHERE IT CAME FROM, WHERE IT'S HEADING...

LET SLEEPING BEARS LIE



HEY, JIMMY!
WHAT ABOUT AT
THE PLAYGROUND?

PLAYGROUNDS
ARE BORING! I GOT
SOMETHING BETTER!

HEY, JIMMY! WHAT ABOUT IN THE FOR-

ESTS ARE EVEN MORE BORING! I GOT SOMETHING BETTER!

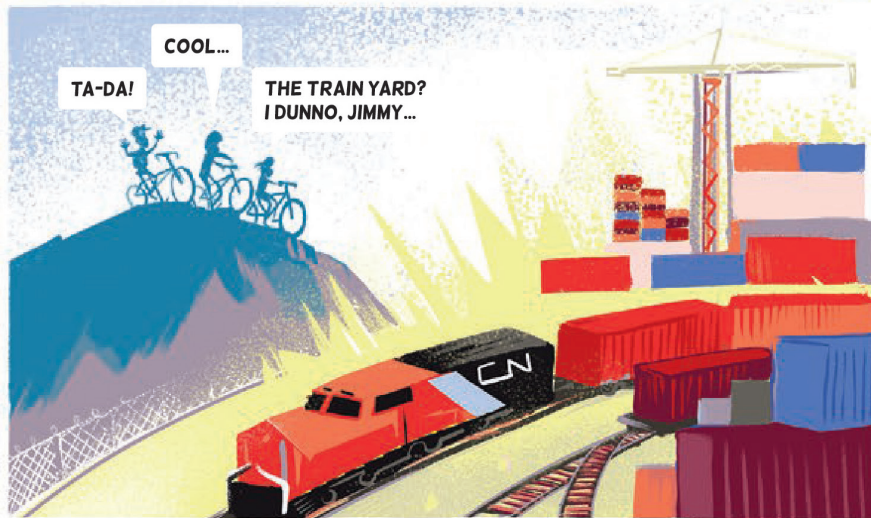
I LIKE FORESTS...



COOL...

TA-DA!

THE TRAIN YARD?
I DUNNO, JIMMY...

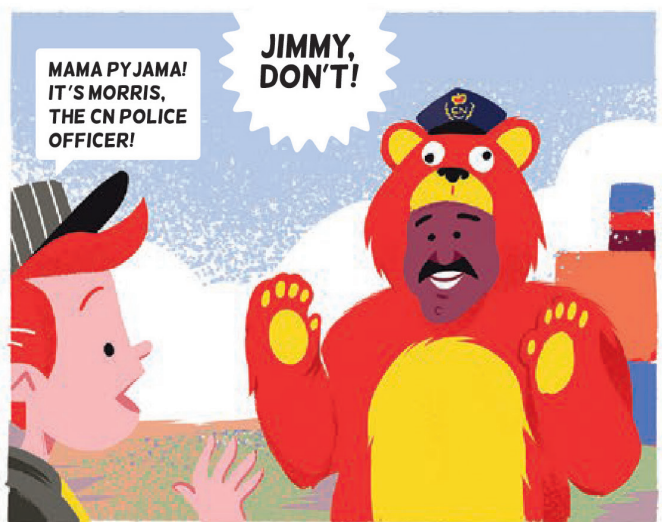


ARE YOU KIDDING ME?
I MEAN, LOOK AT IT...
IT'S PERFECT.





...8, 9, 10. READY
OR NOT, HERE I—



MAMA PYJAMA!
IT'S MORRIS,
THE CN POLICE
OFFICER!

JIMMY,
DON'T!



PLAYING IN THE RAILYARD IS A
TERRIBLE IDEA. RAILCARS ARE LIKE
SLEEPING BEARS. YOU DON'T WANT TO BE
AROUND WHEN THEY START MOVING!

WHY ARE YOU IN A BEAR SUIT?

I'M SURE WE CAN THINK OF A BETTER PLACE TO PLAY.

FORESTS ARE COOL...

ARE YOU DONE WITH
THAT BEAR SUIT?

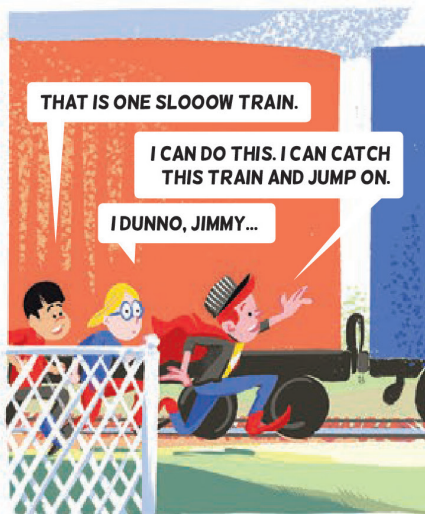


...7, 8...



STUNTMAN SCHOOL

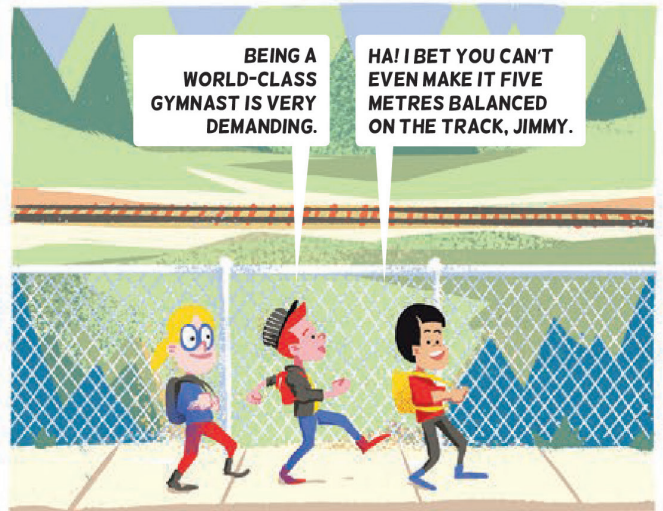




THE LEGEND OF THE CN MOUNTED POLICE



Rlllllling



BEING A
WORLD-CLASS
GYMNAST IS VERY
DEMANDING.

HA! I BET YOU CAN'T
EVEN MAKE IT FIVE
METRES BALANCED
ON THE TRACK, JIMMY.

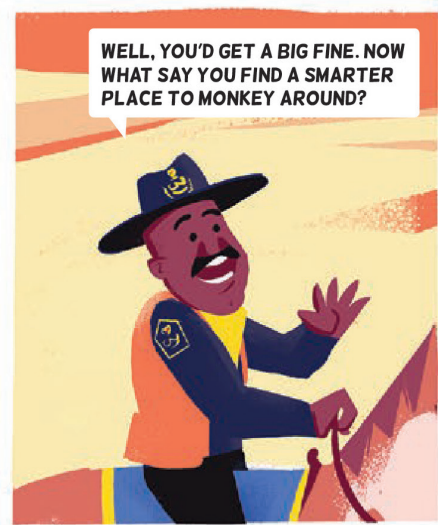


JUST WATCH ME, TOBY.



UHH...

JIMMY,
DON'T!



LET SLEEPING BEARS LIE



HEY, JIMMY!
WHAT ABOUT AT
THE PLAYGROUND?

PLAYGROUNDS
ARE BORING! I GOT
SOMETHING BETTER!

HEY, JIMMY! WHAT ABOUT IN THE FOR-

ESTS ARE EVEN MORE BORING! I GOT SOMETHING BETTER!

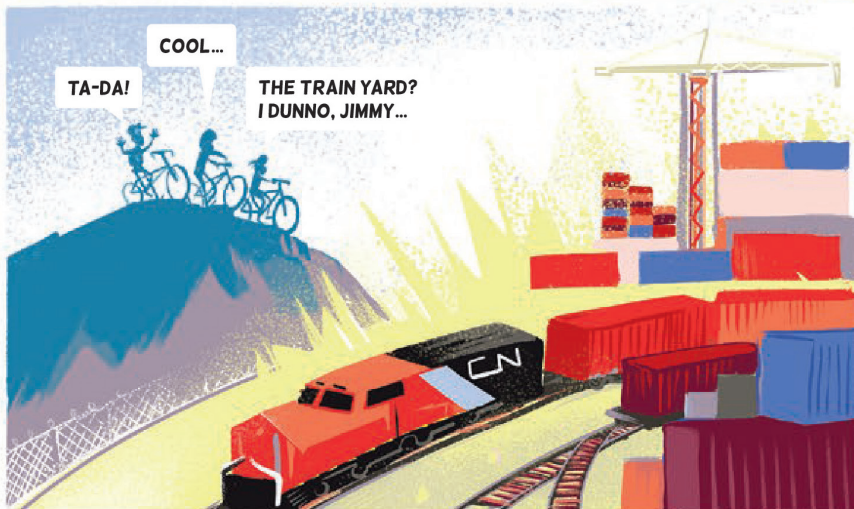
I LIKE FORESTS...



TA-DA!

COOL...

THE TRAIN YARD?
I DUNNO, JIMMY...

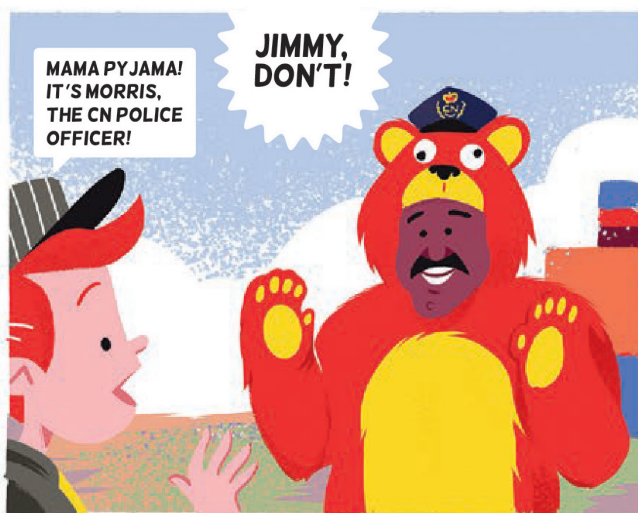


ARE YOU KIDDING ME?
I MEAN, LOOK AT IT...
IT'S PERFECT.





...8, 9, 10. READY
OR NOT, HERE I—



MAMA PY JAMA!
IT'S MORRIS,
THE CN POLICE
OFFICER!

JIMMY,
DON'T!



PLAYING IN THE RAILYARD IS A
TERRIBLE IDEA. RAILCARS ARE LIKE
SLEEPING BEARS. YOU DON'T WANT TO BE
AROUND WHEN THEY START MOVING!

WHY ARE YOU IN A BEAR SUIT?

I'M SURE WE CAN THINK OF A BETTER PLACE TO PLAY.

FORESTS ARE COOL...

ARE YOU DONE WITH
THAT BEAR SUIT?



...7, 8...



**NOW KIDS—WE HOPE
YOU LEARNED SOMETHING
FROM JIMMY! PAY
ATTENTION AND ACT
SMART AROUND RAILROAD
INSTALLATIONS. MORRIS
AND THE REST OF THE
CN POLICE WORK HARD
TO KEEP THE RAILROADS
SECURE, BUT SAFETY
STARTS WITH YOU.**



REMEMBER:

- ✗ DON'T GO THROUGH HOLES
IN THE RAILWAY FENCE.**
- DON'T PLAY
ON THE TRAIN TRACKS.**
- ◆ DON'T PLAY AROUND PARKED
TRAINS IN THE RAILYARD.**
- ✗ DON'T TAKE PICTURES
ON THE TRAIN TRACKS.**
- DON'T GO NEAR
MOVING TRAINS.**
- ◆ DON'T TRY TO BEAT
A TRAIN AT THE
RAILWAY CROSSING.**
- ✗ DON'T HANG AROUND
ON RAILWAY BRIDGES.**
- DON'T PUT OBJECTS
ON THE TRAIN TRACKS.**

**HAVE FUN, BUT
DON'T DO IT AROUND
THE TRACKS!**

**JIMMY HAS PLENTY OF IDEAS
ABOUT HOW TO HAVE FUN. TOO
BAD SO MANY OF THEM INVOLVE
THE RAILROAD TRACKS THAT RUN
THROUGH HIS TOWN!**

**GET READY FOR A ROCKY RIDE AS
PLUCKY JIMMY DRAGS HIS FRIENDS
INTO ONE BOXCAR-FULL OF
TROUBLE AFTER ANOTHER. CAN
MORRIS, THE CN POLICEMAN, KEEP
THEM OFF THE TRACKS AND MAKE
SURE THEY'RE SAFE?**

CLIMB ABOARD AND FIND OUT!



**THIS BOOK WAS CREATED FOR
THE CN100 – A MOVING CELEBRATION TOUR.**