

Smart Terminal

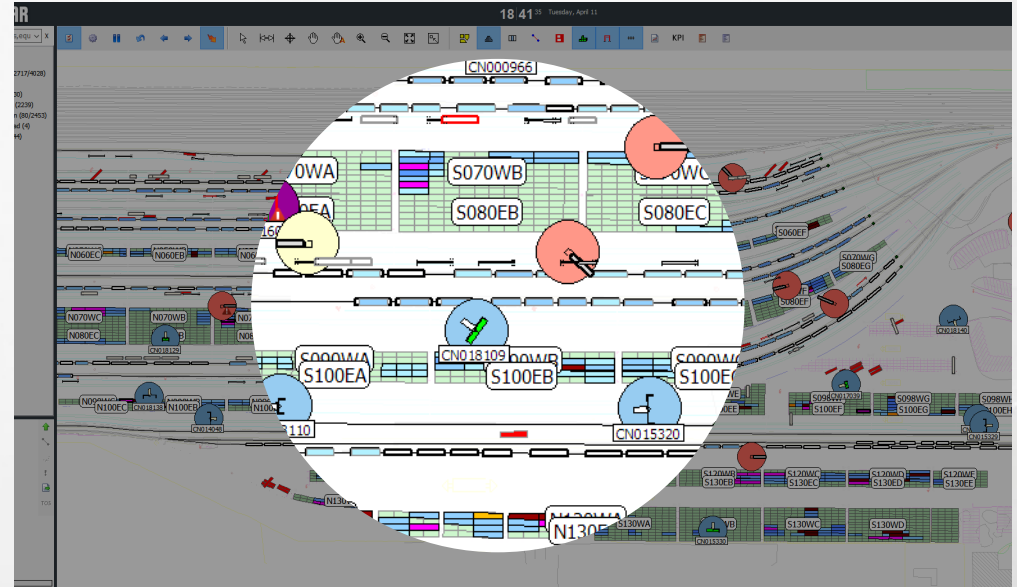
CN's new intermodal terminal operating system increases terminal capacity, improves container location precision and provided real-time crane and shunt truck visibility with optimized move suggestions.

FEATURES

- Yard re-design to improve traffic flow
- Automated Container Tracking increasing storage capacity
- Telematics to efficiently locate containers in the yard
- Smart Screens and Smart Maps reduces number of lifts per container

BENEFITS

- Better customer service driven by accurate container inventory
- Reduced terminal congestion with streamlined yard traffic flows
- Full data visibility results in high capacity utilization and reduced carter turn time
- Improved driver safety with the reduction in container searching

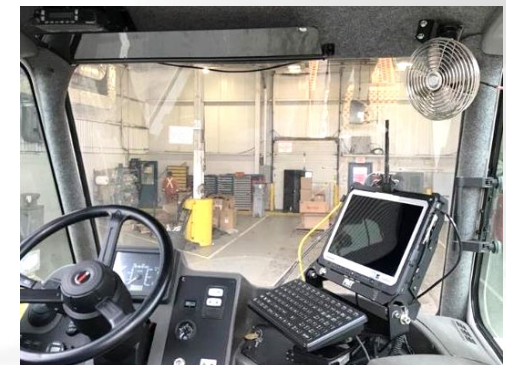


Smart Yard display:

Real-time bird's eye view of cranes, shunt trucks, and containers..



Reach stacker serving a CNTL owner operator.



Shunt truck interior with vehicle-mounted computer.

